

2018 World Cup Series

World Cup Series Hyères, France

Round Sailing Instructions (RSI)

RSI Hyères 16 April 2018 16:00 UTC



France 2018
World Cup
Series

RSI 2 RULES

RSI 2.1 The Addendum Q, Umpire Fleet Racing, can be found at the following links:

[Addendum Q](#)

RSI 2.2 The Addendum Q has been approved by World Sailing in accordance with rule 86.2 and Regulation 28.1.3. It applies to all medal races and all pre-race or post-race activities related to them.

RSI 9 [DP] IDENTIFICATION AND ADVERTISING

RSI 9.1 Boats or competitors are required to display, carry or wear the following advertising and identification that will be provided by the OA and shall be fixed in accordance with the instructions posted on the Official Notice Board:

- a) Bow numbers;
- b) Event stickers;
- c) Bibs for all competitors;
- d) Coloured bibs for event leaders (1st, 2nd and 3rd);
- e) Tracking system; and
- f) Onboard cameras.

10 [DP] [NP] SAFETY REGULATIONS

Emergency Communications:

Communication Channel	Number
Radio VHF	71
Emergency Services	112
On Shore Phone	+33 4 94 01 48 90

RSI 11 COMMUNICATIONS WITH COMPETITORS

- RSI 11.1 Notices to competitors will be posted on the Official Notice Board located at the main tent, close to the race office, and on line at www.sailing.org/worldcup/onb.php.
- RSI 11.2 Signals ashore will be displayed on flagpole(s) located at the first floor of the boating municipal centre and will be repeated on the RS:X, Nacra and 470 boat parks.
- RSI 11.3 When flag AP is displayed ashore, '1 minute' in RRS Race Signals AP is replaced with the time shown below:

Area	Not less than
Alpha, Echo,	30 minutes
Bravo, Charlie, Delta	45 minutes

RSI 14 SCHEDULE AND COURSE ASSIGNMENTS

- RSI 14.1 The opening ceremony will take place on Monday 23 at 18:00h in the main tent.
- RSI 14.2 The first briefing for coaches and sailors will take place on Monday 23 April at 17:00h in the registration tent
- There will be a daily morning meeting with team leaders & Coaches, starting on Wednesday 25 April, at 08.30 in the registration tent..
- RSI 14.3 RSI Addendum 3 - Schedule of Races is published as separate document on the Official Notice Board and on <http://www.sailing.org/worldcup/onb.php>

RSI 15 COURSE AREAS AND MARKS

RSI 15.1 Course Areas are shown in RSI Addendum 1.

RSI 15.2 Marks 1, 2, 3, and 4, or associated gate marks, shall be inflatable marks and will be as follows:

Area	Marks 1, 2, 3, 4	New Mark
Alpha	Red cylinder	Black cylinder
Bravo	Orange cylinder	Yellow cylinder
Charlie	Yellow cylinder	White cylinder
Delta	Black cylinder	Red cylinder
Echo	Green cylinder	Yellow cylinder

RSI 15.3 Offset marks will be the same colour and shape as Mark 1.

RSI 15.4 Marks S1, S2, and S3 will be Orange cylinder.

RSI 15.5 Inflatable finish line mark, when used, will be white cylinder marks.

RSI 20 INTERNATIONAL JURY

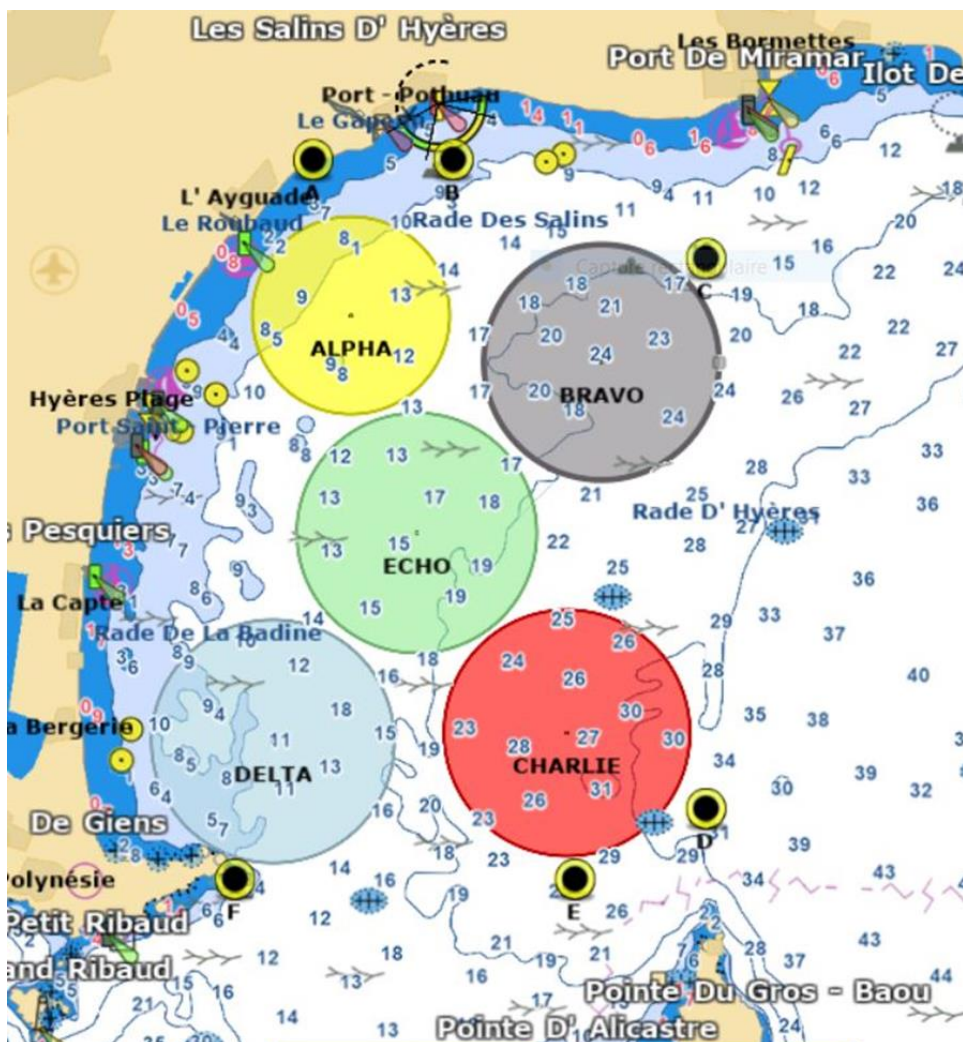
The protest time limit for each event is the number of minutes shown below after either;

- (a) the last boat has finished the last race of the day, or
- (b) the display of "AP over A" or "N over A",

whichever is the later

Area	Minutes
Alpha, Echo,	30 minutes
Bravo, Charlie, Delta	45 minutes

RSI ADDENDUM 1 – CHART OF COURSE AREAS



Area	Area Centre	Area Diameter	VHF Channel	Area	Area Centre	Area Diameter	VHF Channel
Alpha	43° 05.532' N 006° 11.341' E	1.20 nm	67	Delta	43° 02.815' N 006° 10.661 E	1.5 nm	6
Bravo	43° 05.234' N 006° 13.522' E	1.5 nm	8	Echo	43° 04.144 N 006° 11.913 E	1.5 nm	77
Charlie	43° 02.869 'N 006° 13.221 E	1.6 nm	72				

ADDENDUM 2 – VENUE MAP AND BOAT PARKS



20 Eastbourne Terrace
London, UK, W2 6LG

Tel: + 44 (0)2039 404 888

www.sailing.org

sport / nature / technology



France 2018
World Cup
Series